



» Durable incline conveyor modular belt with hinged plate belt. «

The KMF-P 2040.86 is equipped with a robust steel belt and is therefore ideal for transporting hot products or products with sharp edges. Stable belt travel without any lateral movement is ensured regardless of the length-to-width ratio.

Thanks to its stable design, the conveyor is also suitable for demanding continuous duty in multi-shift operation.

The robust hinged plate belt is also available in a stainless steel or perforated design on request.

With a gap of 1 to 3 mm between the side rail and the hinged plate belt which is guided by wear strips, the conveyor system is not suitable for pointed stamping scraps or metal chips.

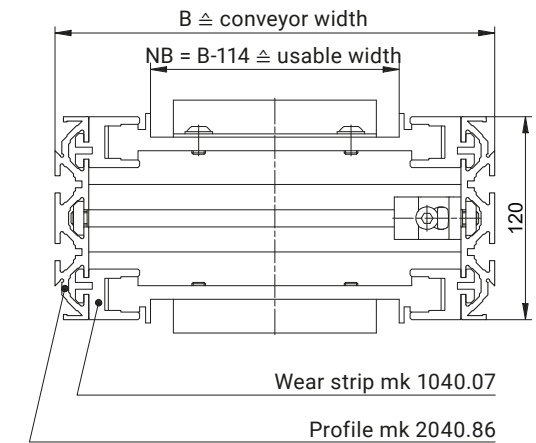
The slots in the profiles allow for the easy connection of accessories such as a side rail, stand, funnel or discharge slide.

Custom solutions, such as special funnels, are available on request. Depending on the project you wish to convey, please also see our incline conveyor with a belt or modular belt.

Benefits of the KFM-P 2040.86

- Incline conveying for connecting different heights
- Stable and heat-resistant surface
- For transporting stamped, cast, forged or wooden parts and for hot product
- High load capacities available
- Stable belt travel without any lateral movement, regardless of length-width ratio
- Transverse cleats for transporting small pieces or bulk product available

Cross Section

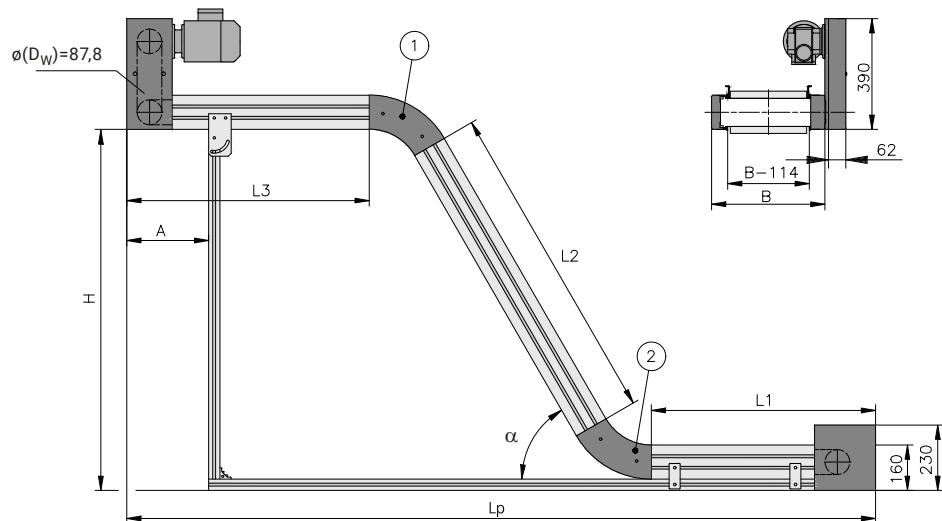




AC – Standard head drive

B20.40.6 __

For the drive version AC, mk offers a multitude of drive motors tailored to various speed and load capacity requirements. The sprocket wheels ensure excellent transmission of the motor power.



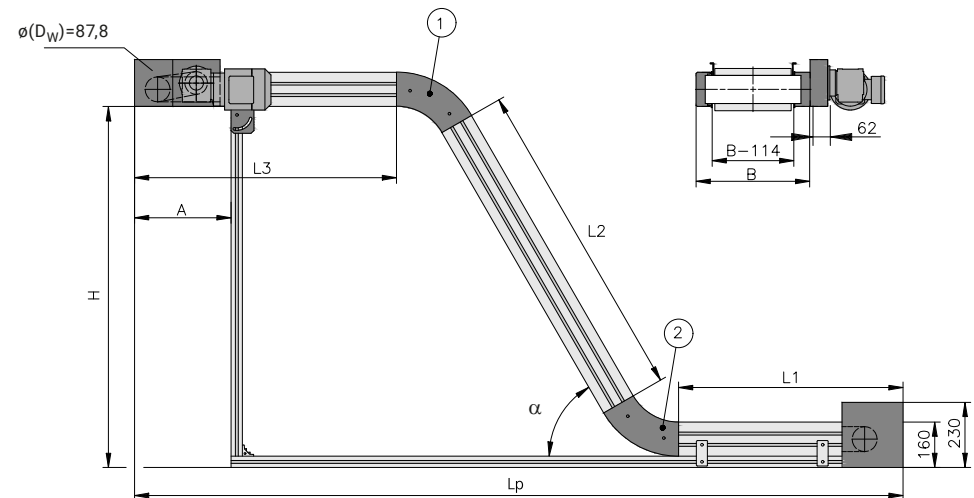
Technical data

Conveyor length L (L1+L2+L3)	depending on belt shape and load, up to 10000 mm	
Conveyor width B	210 to 710 mm (in 50 mm increments)	others on request
Drive location	discharge end left/right, underneath/above	
Drive and speed	up to 12 m/min	p. 12
Stand and side rail		from p. 142
Total load	up to 150 kg	p. 108
Distributed load	up to 50 kg/m, 15 kg/compartment	p. 108
Belt incline α 1 and 2	15, 30, 45 and 60°	others on request

AS – Head drive, laterally on the outside, compact

B20.40.6 __

The drive positioned laterally on the outside allows the total height of the conveyor to be restricted to a minimum. The sprocket wheel with the positive-locked connection to the modular belt ensures excellent transmission of the motor power.



Technical data

Conveyor length L (L1+L2+L3)	depending on belt shape and load, up to 10000 mm	
Conveyor width B	210 to 710 mm (in 50 mm increments)	others on request
Drive location	discharge end left/right	
Drive and speed	up to 12 m/min	p. 12
Stand and side rail		from p. 142
Total load	up to 150 kg	p. 108
Distributed load	up to 50 kg/m, 15 kg/compartment	p. 108
Belt incline α 1 and 2	15, 30, 45 and 60°	others on request

KFM-P 2040.86

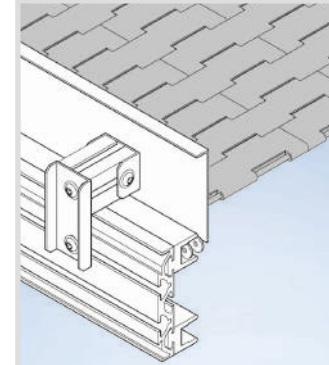
Stands

The stand type shown, stand type A, can be equipped with all the pad options. All the stands in the mk conveyor technology range can be used with type G.

The swivel casters used in pad option 1 have a total locking device and guarantee stability even at high transport speeds.

They are available as \varnothing 75 mm for $x=113$ mm, \varnothing 100 mm for $x=140$ mm and \varnothing 125 mm for $x=165$ mm.

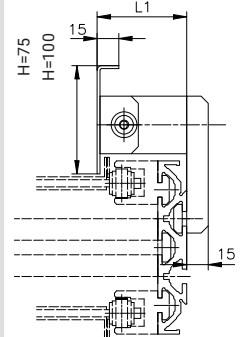
Side Rail SF8.1



The side rail shown ensures the gap (up to 1 to 3 mm) between the modular belt and conveyor frame is sealed.

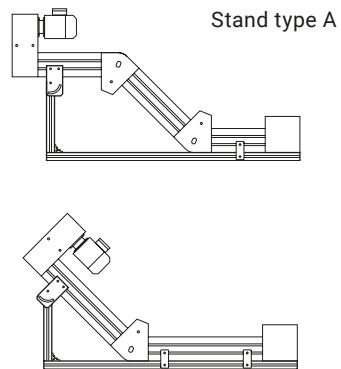
Height H=75 mm
Height H=100 mm

B17.00.026

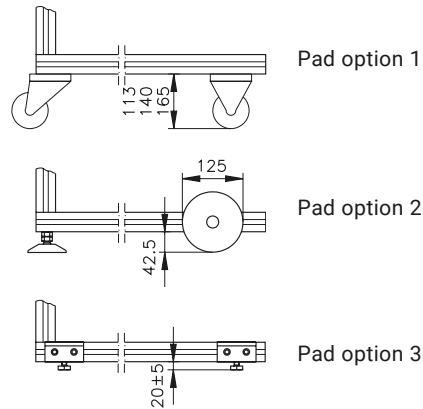


3

3



Stand type A

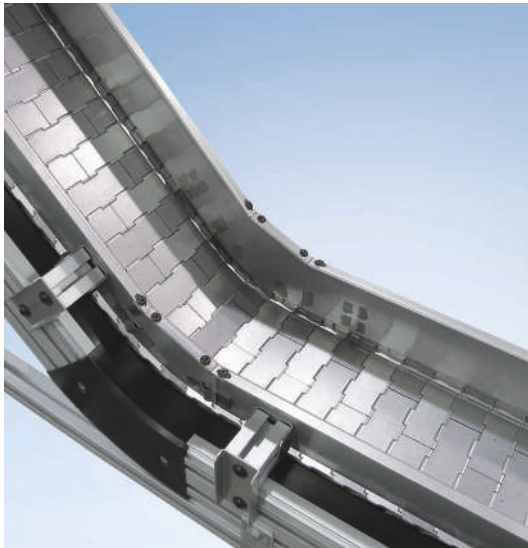


Type designation

Sample order

KFM-P 2040.86 type S (B20.40.606)

	Drive	AC	AS	
Drive AC 0° motor orientation (as shown)	Type S	B20.40. ...	606	610
Speed of 10 m/min				
Conveyor width B = 460 mm				
Conveyor length L1 = 500 mm; L2 = 1000 mm; L3 = 600 mm	Type K	B20.40. ...	607	611
Belt incline α 1 = 60°; belt incline α 2 = 60°				
Cam height H1 = 20 mm (see page 133)				
Stand type A, pad option 1, \varnothing 75 mm roll	Type L	B20.40. ...	608	612
Infeed height ELH = 200 mm				
Discharge height ALH = 1200 mm				



Incline conveyor modular belt KFM-P 2040.86 with 45° incline and side rail SF 8.1



Incline conveyor modular belt KFM-P 2040.86 with 60° incline and side rail SF01



Incline conveyor modular belt KFM-P 2040.86 with 45° incline and head drive AC



KFM-P 2040.86 incline conveyor modular belt



Incline conveyor modular belt KFM-P 2040.86 with drip pan



Incline conveyor modular belt KFM-P 2040.86 with perforated and dimpled hinged plate belt and cams



Incline conveyor modular belt KFM-P 2040.86 with protective box on the infeed end

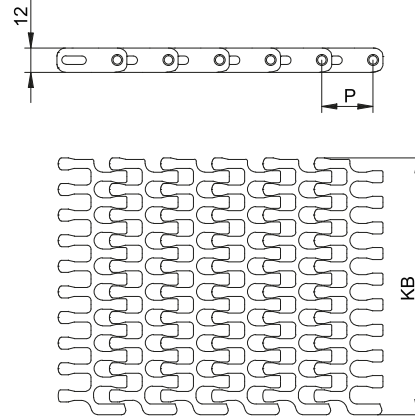


Incline conveyor modular belt KFM-P 2040.86 with head drive AC and 45° incline

Custom applications from page 404

Modular Belts

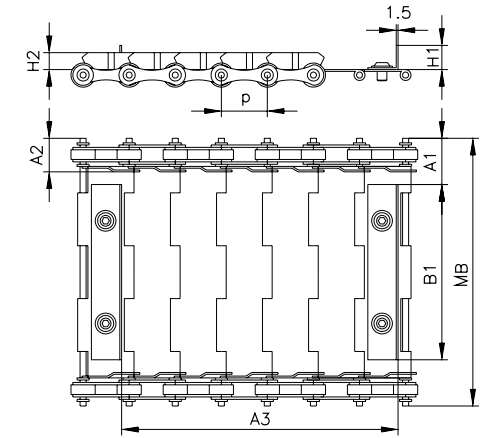
... for KMF-P 2040



The modular belt ASB 2.2 is highly resistant to wear and abrasion, making it suitable for high temperatures, contact with chemicals or food, etc.

Modular Belt	ASB 2.2
Chain width KB	149, 162, 226, 302, 379, 455, 531, 608, 684, 761, 837 and 914 mm
Partition p	25.4 mm
Modular belt thickness	12 mm
Minimum radius (internal)	2.2 x chain width (KB)
Back-flex radius	25.0 mm
FDA/USDA suitability	FDA approval
Material	POM: -40 to +90° C Colours: blue

... for MBF-P 2040.86 and KFM-P 2040.86



The particularly robust hinged plate belt is also available in a stainless steel or perforated design on request.

Hinged Plate Belt	SK1
A1 (without side plate/with side plate)	38.1 mm
A2	25 mm
MB	147–647 mm
Cam height H1	20/40 mm
Side plate height H2	14 mm
Cam partition A3	38.1 mm in grid
Colour	Bright steel
Partition p	38.1 mm
Chain thickness	13 mm
Material	Steel
FDA/USDA suitability	No
Technical properties	Steel Wear-resistant Heat-resistant up to 300° C Resistant to impact Low friction coefficient

Max. total width MB Tolerance ± 3.0 mm	147	197	247	297	347	397	447	497	547	597	647
Weight, kg/linear metre	4.6	5.6	6.6	7.7	8.7	9.7	10.8	11.8	12.8	13.9	14.9