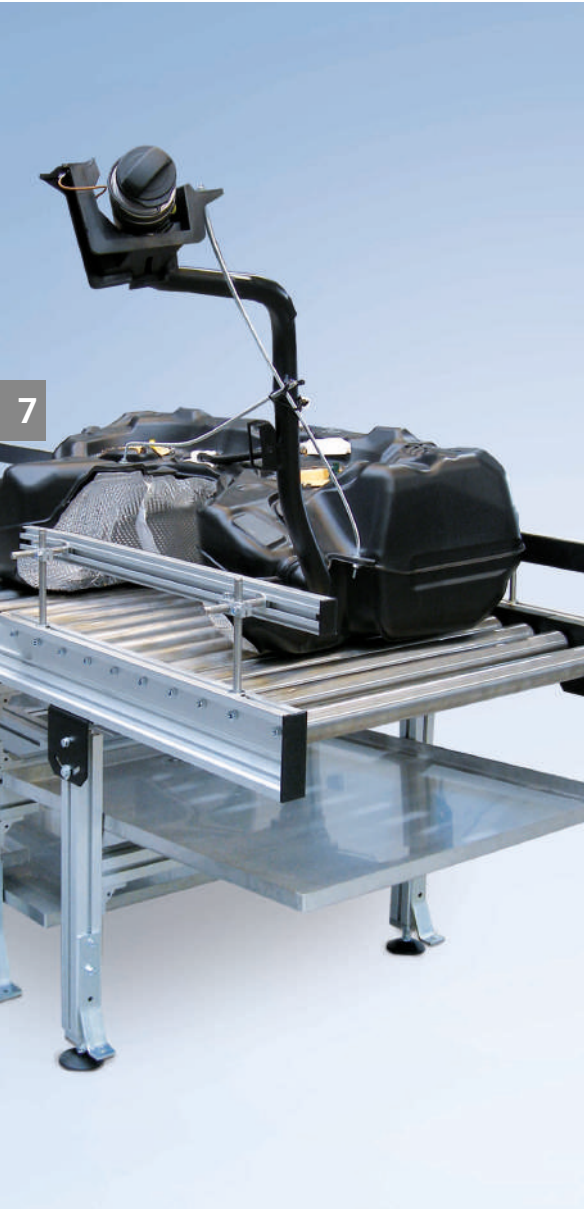


Tangential Chain Roller Conveyor RBT-P 2255



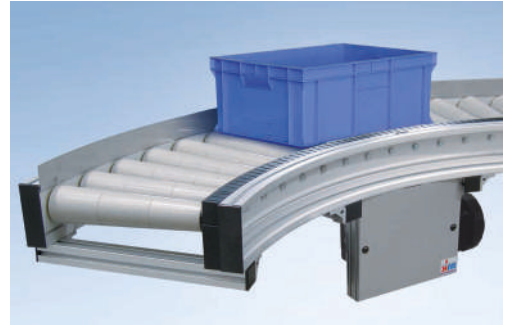
» Straight and curved sections, suitable for even dirty or oily environments. «

The RBT-P 2255 tangential chain roller conveyor is used wherever long conveying paths with a motorised drive mechanism are required. The conveyor is driven by a $\frac{1}{2}$ " chain, which runs within an enclosed, low-wear wear strip to tangentially drive the conveyor rollers from below via a sprocket wheel. This allows you to achieve conveying paths up to 10 m in length and makes the system suitable for even dirty or oily environments.

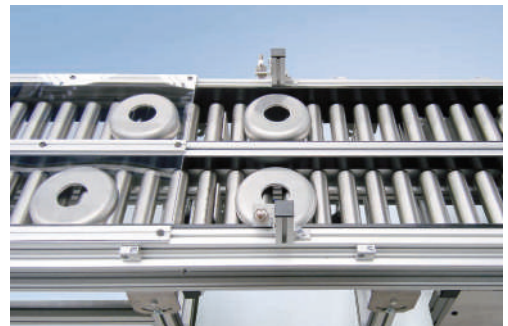
The chain tail is also equipped with idler pulleys supported by ball bearings for minimal friction losses. The tangential chain roller conveyor is available in both straight and curved configurations and can be combined with other roller conveyors (RBS and RBM). The longitudinal slots in the beam profiles can be used to attach side rails, stands, initiators and other accessories.

Benefits of RBT-P 2255

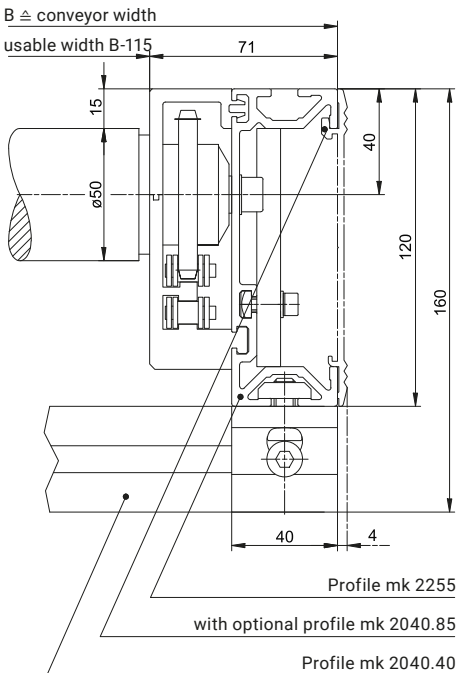
- Driven by a tangential chain
- For transporting products of moderate weight
- For conveying paths up to 10 m long
- Suitable for even dirty or oily environments
- mk 2255 conveyor frame profile allows for combination with RBS and RBM roller conveyors
- Side slots on the conveyor frame profile for attaching accessories such as side rails, stands, etc.



7



Cross Section

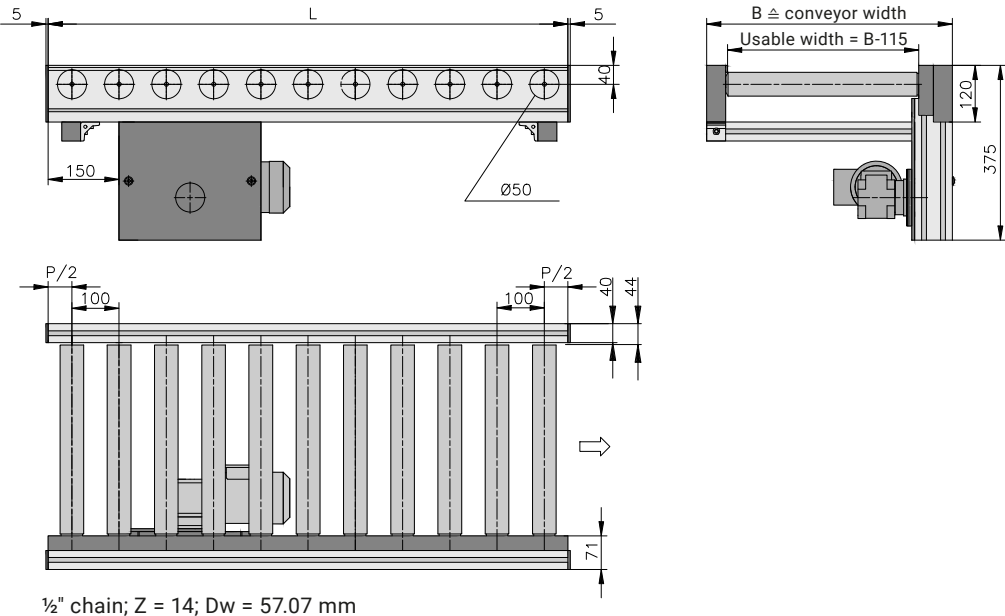


RBT-P 2255 Straight Section

Properties

The tangential chain roller conveyor is based on the mk 2255 profile. The anodised conveyor frame profiles are designed for a spacing of 100 mm and a roller diameter of 50 mm.

B61.02.003



1/2" chain; Z = 14; Dw = 57.07 mm

Technical data

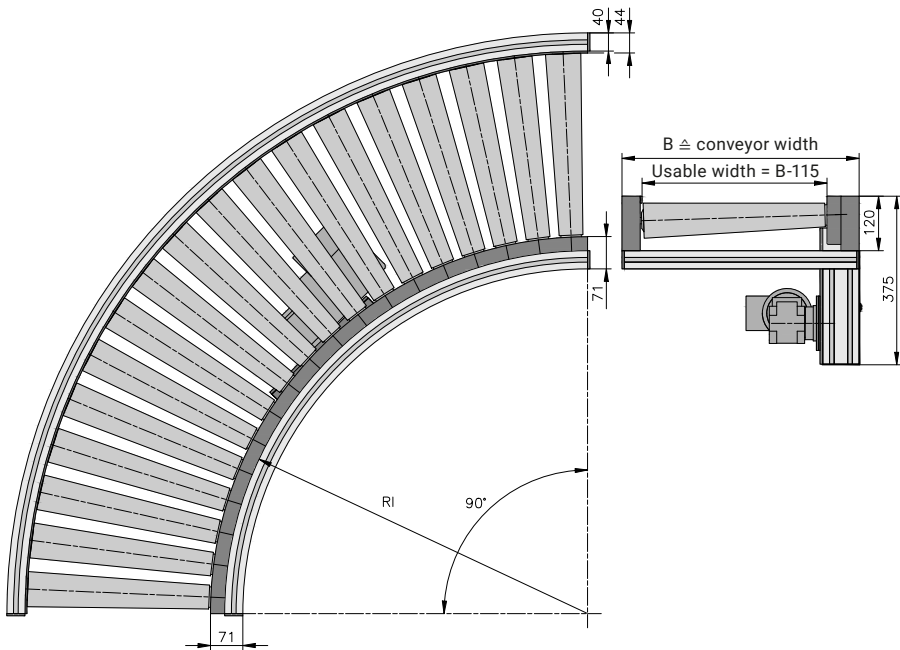
Roller diameter	50 mm, made from galvanised steel	
Conveyor width B	320, 420, 520, 620 and 720 mm	others on request
Conveyor length L	600–10000 mm	others on request
Spacing p	100 mm (optionally 75, 150, 200)	others on request
Conveyor frame profile	mk 2255	
Roller types	type 49 and 57, 60 or 61	from p. 264
Speed	up to 30 m/min	p. 12
Stand	only with conveyor stand option variant D	from p. 280
Load capacity, standard	depending on the conveyor width and conveyor roller, up to 100 kg/m and a total load capacity of 400 kg	higher on request

RBT-P 2255 Curved Section

Properties

The curve builds on the straight line with a cylindrical \varnothing 50 mm roller. The curve is fitted with conical elements based on the radii. The speed specifications refer to the middle of the conveyor. For quiet running, the rollers in the standard version are designed with a 5% partition.

B61.02.004



Technical data

Roller diameter	50 mm, conical, made from plastic	
Conveyor width B	420, 520, 620 and 720 mm	
Inner radius RI	800 mm	
Conveying angle	90°	others on request
Spacing	5°/number: 18 rollers	
Conveyor frame profile	mk 2255	
Roller types	type 50	from p. 264
Speed	up to 30 m/min	p. 12
Stand	only with conveyor stand option variant D	from p. 280
Load capacity, standard	depending on the conveyor width and conveyor roller, up to 100 kg/90°	higher on request